

The purpose of this data is to provide our JPS staff, families and students with a transparent summary of campus COVID-19 cases resulting in exclusion from school activities. An active case indicates that a student or staff member participating in on-campus activities has tested positive for an active COVID-19 infection. Individuals who test positive are excluded from participation in any in-person/on-campus activity until a school official verifies that the individual meets the return criteria set by state and local health authorities. Once the case is cleared to return they are no longer considered an active case and their case is removed from the dashboard count. Please note: *A staff or student in quarantine does not equal a positive case.* They could be in quarantine due to being in close contact with someone that was positive from the school setting or was in close contact with someone that was positive outside of the school setting.

STUDENTS

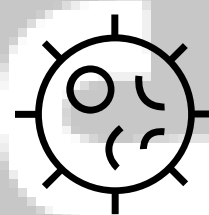
Report Date:
03/03/21

STAFF



4568

Total Number of JPS Students



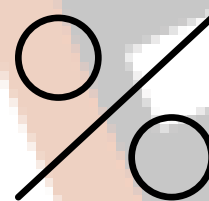
5

Active Cases in JPS Students



20

Total Number of Students in Quarantine



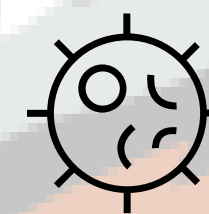
.010%

Percentage of Students with Active Cases



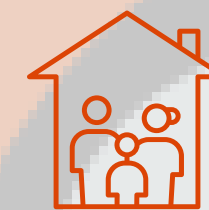
517

Total Number of JPS Employees



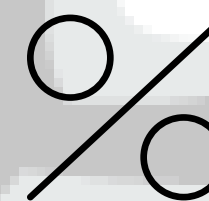
0

Active Cases in JPS Employees



2

Number of Staff in Quarantine



0

Percentage of Staff with Active Cases

ACTIVE CASES BY BUILDING

JPS BUILDING	ACTIVE CASES STAFF	ACTIVE CASES STUDENTS
4TH ST LEARNING CENTER	0	0
CASCADES	0	0
DIBBLE	0	0
HUNT	0	1
JPS MONTESSORI	0	0
JACKSON HIGH SCHOOL	0	0
JACKSON PATHWAYS	0	0
PARKSIDE	0	0
NORTHEAST	0	0
SHARP PARK	0	1
SCMV	0	2
NON-SCHOOL BUILDINGS	0	0