

The purpose of this data is to provide our JPS staff, families and students with a transparent summary of campus COVID-19 cases resulting in exclusion from school activities. An active case indicates that a student or staff member participating in on-campus activities has tested positive for an active COVID-19 infection. Individuals who test positive are excluded from participation in any in-person/on-campus activity until a school official verifies that the individual meets the return criteria set by state and local health authorities. Once the case is cleared to return they are no longer considered an active case and their case is removed from the dashboard count. Please note: *A staff or student in quarantine does not equal a positive case.* They could be in quarantine due to being in close contact with someone that was positive from the school setting or was in close contact with someone that was positive outside of the school setting.

STUDENTS

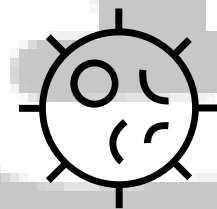
Report Date:
09/23/21

STAFF



4768

Total Number of JPS Students



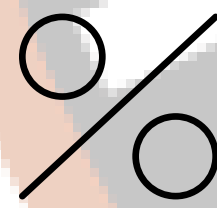
7

Active Cases in JPS Students



28

Close Contact



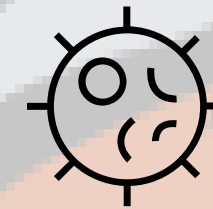
.0014

Percentage of Students with Active Cases



760

Total Number of JPS Staff



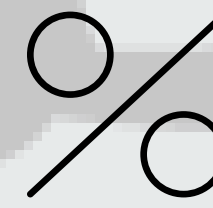
4

Active Cases in JPS Staff



1

Close Contact



.0052

Percentage of Staff with Active Cases

Positive & Quarantine Numbers by Building

	Positive Students	Positive Staff	Close Contact Students	Close Contact Staff	Date of Reporting
Cascades	0	1	0	1	9/23/2021
Dibble	1	0	4	0	9/22/2021
Hunt	0	0	0	0	9/23/2021
John R Lewis	1	0	0	0	9/23/2021
Montessori	0	0	0	0	9/23/2021
Northeast	3	1	16	0	9/23/2021
Sharp Park	0	0	0	0	9/23/2021
Parkside	0	2	3	0	9/23/2021
4th St	0	0	1	0	9/23/2021
Jackson High	1	0	4	0	9/23/2021
Jackson Pathways	0	0	0	0	9/23/2021
SCMV	1	0	0	0	9/23/2021
Reynolds Hall	n/a	0	n/a	0	9/22/2021
Operations	n/a	0	n/a	0	9/23/2021
Food Service	n/a	0	n/a	0	9/23/2021
EnviroClean	n/a	0	n/a	0	9/23/2021
Transportation	n/a	0	n/a	0	9/23/2021
Totals	7	4	28	1	

