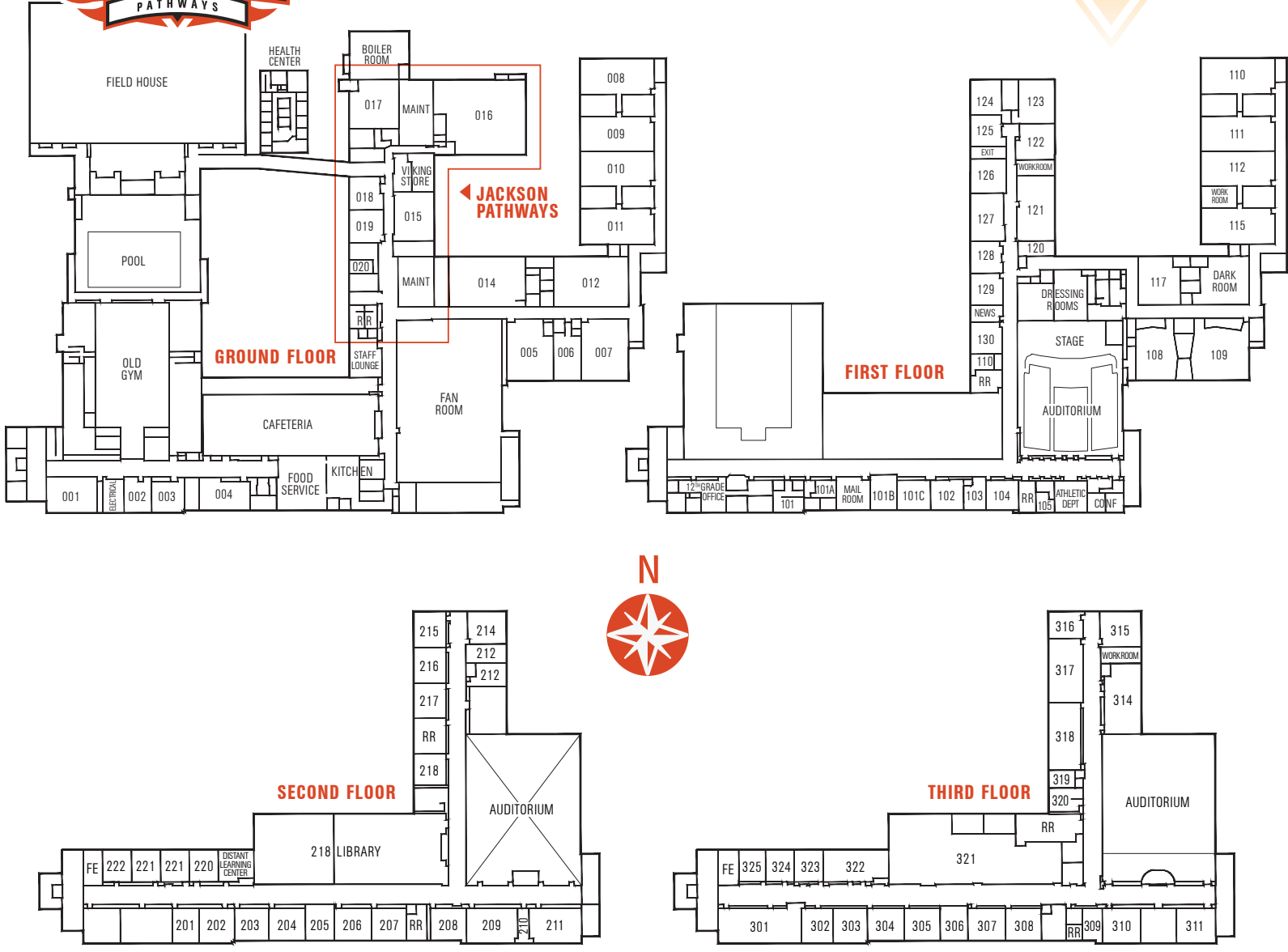


# JACKSON PATHWAYS HIGH SCHOOL



Community schools in Jackson have existed since the 1830s, and the current **JACKSON HIGH SCHOOL** building was opened in 1927. The brick and limestone building is a Collegiate Gothic style with two long wings that flank a prominent spired central tower.

Today, Jackson High School contains a 1,511 seat auditorium, an expansive library, nine computer labs, and several outstanding athletic facilities. Withington Stadium, home of Dungy Field, sports a field

turf surface surrounded by a nine-lane, 400 meter track. JHS also offers a 2,000 seat field house for volleyball and basketball, a six-lane, twenty-five yard length pool, and a new baseball complex.

**JACKSON PATHWAYS** is located on the ground floor of JHS. This school-within-a-school model provides nontraditional classroom experiences to students who may struggle within the traditional classroom environment.